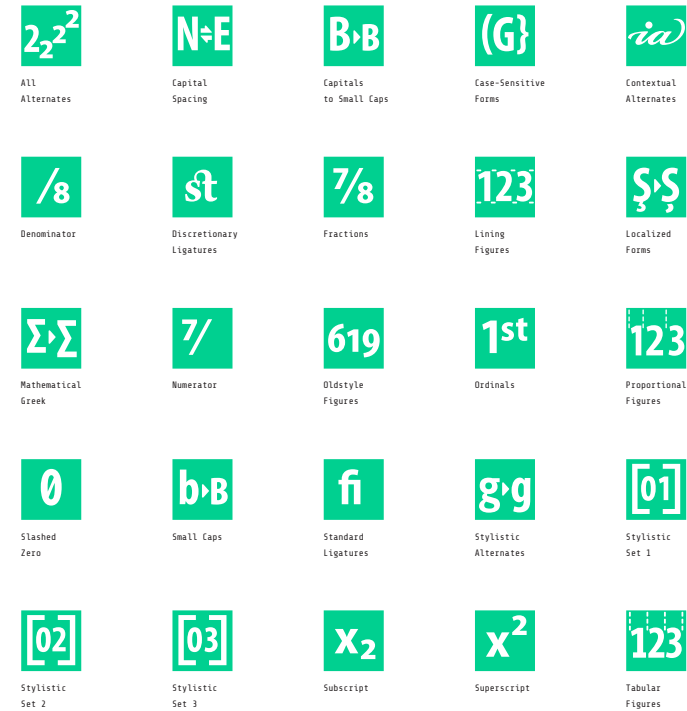


Technical Report [2708 Glyphs]

# Fira Sans Condensed

Two Italic  
Four Italic  
Eight Italic  
Hair Italic  
Thin Italic  
UltraLight Italic  
Extralight Italic  
Light Italic  
Book Italic  
Italic  
Medium Italic  
SemiBold Italic  
Bold Italic  
ExtraBold Italic  
Heavy Italic  
Ultra Italic

## OT-Features, Scripts & Languages



### Supported Script(s):

Latin  
Cyrillic  
Greek

### 58 languages and many more:

Afrikaans, Albanian, Basque, Bosnian, Breton, Bulgarian, Corsican, Croatian, Czech, Danish, Dutch, English, Esperanto, Estonian, Faroese, Finnish, French, Galician, German, Greek, Greenlandic, Hungarian, Icelandic, Indonesian, Irish, Italian, Kurdish, Latvian, Leonese, Lithuanian, Luxembourgish, Malay, Malaysian, Malti, Manx, Norwegian, Occitan, Polish, Portuguese, Rhaeto-Romanic, Romanian, Russian, Sami, Scottish Gaelic, Serbian Latin, Slovak, Slovakian, Slovene, Slovenian, Sorbian (Lower), Sorbian (Upper), Spanish, Swahili, Swedish, Turkish, Turkmen, Ukrainian, Walloon

## Code Pages

## ISO 8859 ##  
Mac OS Central European  
Mac OS Cyrillic  
Mac OS Greek  
Mac OS Ukrainian

## Mac OS ##  
MS Windows 1250 Central European  
MS Windows 1251 Cyrillic  
MS Windows 1252 Western (ANSI)  
MS Windows 1253 Greek  
MS Windows 1254 Turkish  
MS Windows 1257 Baltic  
MS Windows 1258 Vietnamese

## MS Windows ##  
ISO 8859-1 Latin 1 (Western)  
ISO 8859-2 Latin 2 (Central Europe)  
ISO 8859-3 Latin 3 (Tu, Malt, Gal, Esp)  
ISO 8859-4 Latin 4 (Baltic)  
ISO 8859-5 Cyrillic  
ISO 8859-9 Latin 5 (Turkish)  
ISO 8859-15 Latin 9

## Encoded Glyphs

### Basic Latin (0000-007F)

		!	"	#	\$	%	&	'	(	)	*	+	,
0000	0020	0021	0022	0023	0024	0025	0026	0027	0028	0029	002A	002B	002C
-	.	/	0	1	2	3	4	5	6	7	8	9	:
002D	002E	002F	0030	0031	0032	0033	0034	0035	0036	0037	0038	0039	003A
;	<	=	>	?	@	A	B	C	D	E	F	G	H
003B	003C	003D	003E	003F	0040	0041	0042	0043	0044	0045	0046	0047	0048
I	J	K	L	M	N	O	P	Q	R	S	T	U	V
0049	004A	004B	004C	004D	004E	004F	0050	0051	0052	0053	0054	0055	0056
W	X	Y	Z	[	\	]	^	_	`	a	b	c	d
0057	0058	0059	005A	005B	005C	005D	005E	005F	0060	0061	0062	0063	0064
e	f	g	h	i	j	k	l	m	n	o	p	q	r
0065	0066	0067	0068	0069	006A	006B	006C	006D	006E	006F	0070	0071	0072
s	t	u	v	w	x	y	z	{		}	~		
0073	0074	0075	0076	0077	0078	0079	007A	007B	007C	007D	007E		

## Encoded Glyphs

### Latin-1 Supplement (0080-00FF)

00A0	00A1	00A2	00A3	00A4	00A5	00A6	00A7	00A8	00A9	00AA	00AB	00AC	00AD
®	™	°	±	²	³	´	μ	¶	·	¸	¹	º	»
¼	½	¾	¿	À	Á	Â	Ã	Ä	Å	Æ	Ç	È	É
Ê	Ë	Ì	Í	Î	Ï	Ð	Ñ	Ò	Ó	Ô	Õ	Ö	×
Ø	Ù	Ú	Û	Ü	Ý	Þ	ß	à	á	â	ã	ä	å
æ	ç	è	é	ê	ë	ì	í	î	ï	ð	ñ	ò	ó
ô	õ	ö	÷	ø	ù	ú	û	ü	ý	þ	ÿ		
00F4	00F5	00F6	00F7	00F8	00F9	00FA	00FB	00FC	00FD	00FE	00FF		

Encoded Glyphs

Latin Extended-A (0100-017F)

Ā	ā	Ă	ă	Ą	ą	Ć	ć	Ĉ	ĉ	Ċ	ċ	Č	č
0100	0101	0102	0103	0104	0105	0106	0107	0108	0109	010A	010B	010C	010D
Ď	ď	Ð	đ	Ē	ē	Ě	ě	Ė	ė	Ę	ę	Ě	ě
010E	010F	0110	0111	0112	0113	0114	0115	0116	0117	0118	0119	011A	011B
Ĝ	ĝ	Ğ	ğ	Ġ	ġ	Ģ	ģ	Ĥ	ĥ	Ħ	ħ	Ĩ	ĩ
011C	011D	011E	011F	0120	0121	0122	0123	0124	0125	0126	0127	0128	0129
Ī	ī	Ĳ	ĳ	Ĵ	ĵ	Ķ	ķ	Ĳ	ĳ	Ĵ	ĵ	Ķ	ķ
012A	012B	012C	012D	012E	012F	0130	0131	0132	0133	0134	0135	0136	0137
Ķ	Ļ	ļ	Ł	ł	Ł	ł	Ł	ł	Ł	ł	Ń	ń	Ń
0138	0139	013A	013B	013C	013D	013E	013F	0140	0141	0142	0143	0144	0145
Ń	Ń	ň	ŋ	Ń	ŋ	Ō	ō	Ŏ	ö	Ŏ	ö	Œ	œ
0146	0147	0148	0149	014A	014B	014C	014D	014E	014F	0150	0151	0152	0153
Ŕ	ŕ	Ŗ	ŗ	Ř	ř	Ś	ś	Ŝ	ŝ	Ş	ş	Š	š
0154	0155	0156	0157	0158	0159	015A	015B	015C	015D	015E	015F	0160	0161

Encoded Glyphs

Ŧ	ț	ř	ť	ƒ	ƒ	Ũ	ũ	Ū	ū	Ŭ	ŭ	Ů	ů
0162	0163	0164	0165	0166	0167	0168	0169	016A	016B	016C	016D	016E	016F
Ů	ů	Ƴ	ƴ	Ŵ	ŵ	Ŷ	ŷ	ÿ	Ž	ž	Ž	ž	Ž
0170	0171	0172	0173	0174	0175	0176	0177	0178	0179	017A	017B	017C	017D
Ž	f												
017E	017F												

Latin Extended-B (0180-024F)

Ĕ	Ė	Ђ	ƀ	Ɓ	ƃ	Ɔ	Ć	ć	Ð	Đ	Ď	ď	Ƨ
0180	0181	0182	0183	0184	0185	0186	0187	0188	0189	018A	018B	018C	018D
Ǝ	Ə	Ɛ	Ƒ	ƒ	Ɠ	Ɣ	ħ	ł	ł	Ƙ	ƙ	ł	ł
018E	018F	0190	0191	0192	0193	0194	0195	0196	0197	0198	0199	019A	019B
Ƶ	ƶ	Ʒ	Ƹ	ƹ	ƺ	ƻ	Ƽ	ƽ	ƿ	ƾ	ƿ	ƿ	ƿ
019C	019D	019E	019F	01A0	01A1	01A2	01A3	01A4	01A5	01A6	01A7	01A8	01A9
ƿ	ƿ	ƿ	ƿ	ƿ	ƿ	ƿ	ƿ	ƿ	ƿ	ƿ	ƿ	ƿ	ƿ
01AA	01AB	01AC	01AD	01AE	01AF	01B0	01B1	01B2	01B3	01B4	01B5	01B6	01B7

Encoded Glyphs

Ɔ	Ɔ	Ʒ	Ʒ	Ɔ	Ɔ	Ɔ	Ɔ	Ɔ	Ɔ	Ɔ	Ɔ	Ɔ	Ɔ
01B8	01B9	01BA	01BB	01BC	01BD	01BE	01BF	01C0	01C1	01C2	01C3	01C4	01C5
dž	Lj	Lj	lj	Nj	Nj	nj	Ǻ	ǻ	ǻ	ǻ	ǻ	ǻ	ǻ
01C6	01C7	01C8	01C9	01CA	01CB	01CC	01CD	01CE	01CF	01D0	01D1	01D2	01D3
ǻ	Ū	ū	Ū	ū	Ū	ū	Ū	ū	ə	Ā	ā	Ā	ā
01D4	01D5	01D6	01D7	01D8	01D9	01DA	01DB	01DC	01DD	01DE	01DF	01E0	01E1
Ā	ā	G	g	Ǧ	ǧ	Ǧ	ǧ	Q	q	Q	q	Ǧ	ǧ
01E2	01E3	01E4	01E5	01E6	01E7	01E8	01E9	01EA	01EB	01EC	01ED	01EE	01EF
ǧ	DZ	Dz	dz	Ġ	ġ	Hu	P	Ñ	ñ	Á	á	Á	á
01F0	01F1	01F2	01F3	01F4	01F5	01F6	01F7	01F8	01F9	01FA	01FB	01FC	01FD
Ø	ø	Ä	ä	Â	â	Ë	ë	Ê	ê	Ï	ï	Î	î
01FE	01FF	0200	0201	0202	0203	0204	0205	0206	0207	0208	0209	020A	020B
Ö	ö	Ô	ô	Ř	ř	Ŕ	ŕ	Û	û	Û	û	Ş	ş
020C	020D	020E	020F	0210	0211	0212	0213	0214	0215	0216	0217	0218	0219



Encoded Glyphs

Ŧ 021A	ŧ 021B	Ɔ 021C	ɔ 021D	Ĥ 021E	ĥ 021F	ŋ 0220	ɔ̥ 0221	ɔ̥ 0222	ɔ̥ 0223	Ʒ 0224	ʒ 0225	À 0226	à 0227
Ɔ̥ 0228	ɔ̥ 0229	Ō 022A	ō 022B	Ō̃ 022C	ō̃ 022D	Ò 022E	ò 022F	Ō̄ 0230	ō̄ 0231	Ȳ 0232	ȳ 0233	ɓ 0234	ɓ̥ 0235
ɓ̥ 0236	ɓ̥ 0237	ɔ̥ 0238	ɔ̥ 0239	Ɔ̥ 023A	Ɔ̥ 023B	Ɔ̥ 023C	Ɔ̥ 023D	Ɔ̥ 023E	Ɔ̥ 023F	Ɔ̥ 0240	Ɔ̥ 0241	Ɔ̥ 0242	Ɔ̥ 0243
Ɔ̥ 0244	Ɔ̥ 0245	Ɔ̥ 0246	Ɔ̥ 0247	Ɔ̥ 0248	Ɔ̥ 0249	Ɔ̥ 024A	Ɔ̥ 024B	Ɔ̥ 024C	Ɔ̥ 024D	Ɔ̥ 024E	Ɔ̥ 024F		
IPA Extensions (0250–02AF)													
ɐ 0250	ɑ 0251	ɒ 0252	ɓ 0253	ɔ 0254	ɔ̥ 0255	ɔ̥ 0256	ɔ̥ 0257	ɔ̥ 0258	ɔ̥ 0259	ɔ̥ 025A	ɔ̥ 025B	ɔ̥ 025C	ɔ̥ 025D
ɔ̥ 025E	ɔ̥ 025F	ɔ̥ 0260	ɔ̥ 0261	ɔ̥ 0262	ɔ̥ 0263	ɔ̥ 0264	ɔ̥ 0265	ɔ̥ 0266	ɔ̥ 0267	ɔ̥ 0268	ɔ̥ 0269	ɔ̥ 026A	ɔ̥ 026B
ɔ̥ 026C	ɔ̥ 026D	ɔ̥ 026E	ɔ̥ 026F	ɔ̥ 0270	ɔ̥ 0271	ɔ̥ 0272	ɔ̥ 0273	ɔ̥ 0274	ɔ̥ 0275	ɔ̥ 0276	ɔ̥ 0277	ɔ̥ 0278	ɔ̥ 0279

Encoded Glyphs

J	l	r	ŀ	ŕ	ſ	R	B	Œ	Ŧ	f	z	ſ	ſ
027A	027B	027C	027D	027E	027F	0280	0281	0282	0283	0284	0285	0286	0287
t	tt	ü	U	Λ	M	Λ	Y	Z	Z	3	3	?	ſ
0288	0289	028A	028B	028C	028D	028E	028F	0290	0291	0292	0293	0294	0295
5	C	⊙	B	ø	G	H	j	K	L	q	?	ſ	dz
0296	0297	0298	0299	029A	029B	029C	029D	029E	029F	02A0	02A1	02A2	02A3
d3	d4	ts	tf	t6	fj	ls	lz	W	W	u	u		
02A4	02A5	02A6	02A7	02A8	02A9	02AA	02AB	02AC	02AD	02AE	02AF		
Spacing Modifier Letters (02B0-02FF)													
h	h	j	l	w	y	/	//	‘	,	‘	?	^	v
02B0	02B1	02B2	02B4	02B7	02B8	02B9	02BA	02BB	02BC	02BF	02C0	02C6	02C7
l	ˆ	˘	l	˘	˘	˘	˘	˘	˘	˘	˘	˘	˘
02C8	02CA	02CB	02CC	02CE	02CF	02D0	02D1	02D4	02D6	02D7	02D8	02D9	02DA
c	~	”	˘	γ	l	s	x	ſ	ſ	ſ	ſ	ſ	ſ
02DB	02DC	02DD	02DE	02E0	02E1	02E2	02E3	02E4	02E5	02E6	02E7	02E8	02E9

Encoded Glyphs

”  
02EE

Combining Diacritical Marks (0300-036F)

˘	˙	˚	˛	˜	˘	•	◌◌	?	◦	”	˘	˙	”
0300	0301	0302	0303	0304	0306	0307	0308	0309	030A	030B	030C	030D	030F
◌◌	◌◌	◌◌	◌◌	◌◌	◌◌	◌◌	◌◌	◌◌	◌◌	◌◌	◌◌	◌◌	◌◌
0311	0312	0313	0316	0317	◌◌	◌◌	031A	031B	◌◌	◌◌	◌◌	◌◌	◌◌
◌◌	◌◌	◌◌	◌◌	◌◌	◌◌	◌◌	◌◌	◌◌	◌◌	◌◌	◌◌	◌◌	◌◌
0321	0323	0324	0325	0326	0327	◌◌	◌◌	◌◌	◌◌	◌◌	◌◌	◌◌	◌◌
◌◌	◌◌	◌◌	◌◌	◌◌	◌◌	◌◌	◌◌	◌◌	◌◌	◌◌	◌◌	◌◌	◌◌
0331	0332	0334	0335	0336	0339	◌◌	◌◌	◌◌	◌◌	◌◌	◌◌	◌◌	◌◌

Greek and Coptic (0370-03FF)

◌◌	◌◌	◌◌	◌◌	◌◌	◌◌	◌◌	◌◌	◌◌	◌◌	◌◌	◌◌	◌◌	◌◌
0370	0371	0372	0373	0374	0375	0376	0377	037A	037B	037C	037D	037E	037F
◌◌	◌◌	◌◌	◌◌	◌◌	◌◌	◌◌	◌◌	◌◌	◌◌	◌◌	◌◌	◌◌	◌◌
0384	0385	0386	0387	0388	0389	038A	038C	038E	038F	0390	0391	0392	0393

Encoded Glyphs

Δ 0394	Ε 0395	Ζ 0396	Η 0397	Θ 0398	Ι 0399	Κ 039A	Λ 039B	Μ 039C	Ν 039D	Ξ 039E	Ο 039F	Π 03A0	Ρ 03A1
Σ 03A3	Τ 03A4	Υ 03A5	Φ 03A6	Χ 03A7	Ψ 03A8	Ω 03A9	ϊ 03AA	ϋ 03AB	ά 03AC	έ 03AD	ή 03AE	ί 03AF	ύ 03B0
α 03B1	β 03B2	γ 03B3	δ 03B4	ε 03B5	ζ 03B6	η 03B7	θ 03B8	ι 03B9	κ 03BA	λ 03BB	μ 03BC	ν 03BD	ξ 03BE
ο 03BF	π 03C0	ρ 03C1	ς 03C2	σ 03C3	τ 03C4	υ 03C5	φ 03C6	χ 03C7	ψ 03C8	ω 03C9	ϊ 03CA	ϋ 03CB	ό 03CC
ύ 03CD	ώ 03CE	κ 03CF	β 03D0	θ 03D1	γ 03D2	ϣ 03D3	ϥ 03D4	φ 03D5	π 03D6	ι 03D7	ρ 03D8	ρ 03D9	ς 03DA
ς 03DB	Ɔ 03DC	Ɔ 03DD	Ɔ 03DE	Ɔ 03DF	Λ 03E0	λ 03E1	и 03F0	ρ 03F1	Ɔ 03F2	Ɔ 03F3	Θ 03F4	Ɔ 03F5	Ɔ 03F6
Ɔ 03F7	Ɔ 03F8	Ɔ 03F9	Ɔ 03FA	Ɔ 03FB	Ɔ 03FC	Ɔ 03FD	Ɔ 03FE	Ɔ 03FF					

Encoded Glyphs

Cyrillic (0400-04FF)

È 0400	Ë 0401	Ħ 0402	Ĝ 0403	€ 0404	Ɔ 0405	Ƈ 0406	İ 0407	Ɔ 0408	Љ 0409	Њ 040A	Ħ 040B	Ɔ 040C	Й 040D
ÿ 040E	Ɔ 040F	А 0410	Б 0411	В 0412	Г 0413	Д 0414	Е 0415	Ж 0416	З 0417	И 0418	Й 0419	К 041A	Л 041B
М 041C	Н 041D	О 041E	П 041F	Р 0420	С 0421	Т 0422	У 0423	Ф 0424	Х 0425	Ц 0426	Ч 0427	Ш 0428	Щ 0429
Ъ 042A	Ы 042B	Ь 042C	Э 042D	Ю 042E	Я 042F	а 0430	б 0431	в 0432	г 0433	д 0434	е 0435	ж 0436	з 0437
и 0438	й 0439	к 043A	л 043B	м 043C	н 043D	о 043E	п 043F	р 0440	с 0441	т 0442	у 0443	ф 0444	х 0445
ц 0446	ч 0447	ш 0448	щ 0449	ъ 044A	ы 044B	ь 044C	э 044D	ю 044E	я 044F	è 0450	ë 0451	ĥ 0452	é 0453
€ 0454	Ɔ 0455	ı 0456	İ 0457	Ɔ 0458	Љ 0459	Њ 045A	ĥ 045B	Ɔ 045C	ù 045D	ÿ 045E	Ɔ 045F	Ω 0460	ω 0461

Encoded Glyphs

Ђ	ђ	Ѓ	ѓ	А	а	Ӏ	Ӂ	Ӓ	ӓ	Ӕ	ӕ	Ӗ	ӗ
0462	0463	0464	0465	0466	0467	0468	0469	046A	046B	046C	046D	046E	046F
Ψ	ψ	Θ	θ	Ƶ	ƶ	Ʒ	Ƹ	ƹ	ƺ	ƻ	Ƽ	Ђ	ђ
0470	0471	0472	0473	0474	0475	0476	0477	0478	0479	048A	048B	048C	048D
Р	р	Г	г	Ƒ	ƒ	ђ	ѓ	Ӓ	ӓ	Ӕ	ӕ	Ӗ	ӗ
048E	048F	0490	0491	0492	0493	0494	0495	0496	0497	0498	0499	049A	049B
К	к	Ƒ	ƒ	Ƒ	ƒ	Ӏ	Ӂ	Ӓ	ӓ	Ӕ	ӕ	Ӗ	ӗ
049C	049D	049E	049F	04A0	04A1	04A2	04A3	04A4	04A5	04A6	04A7	04A8	04A9
Ѓ	ѓ	Ƒ	ƒ	Ƒ	ƒ	Ƒ	ƒ	Ӏ	Ӂ	Ӓ	ӓ	Ӕ	ӕ
04AA	04AB	04AC	04AD	04AE	04AF	04B0	04B1	04B2	04B3	04B4	04B5	04B6	04B7
Ч	ч	h	h	е	е	е	е	l	Ӓ	ӓ	Ӕ	ӕ	Ӗ
04B8	04B9	04BA	04BB	04BC	04BD	04BE	04BF	04C0	04C1	04C2	04C3	04C4	04C5
Ӏ	Ӂ	Ӓ	ӓ	Ӕ	ӕ	Ӗ	ӗ	Ә	ә	Ӛ	ӛ	Ӝ	ӝ
04C6	04C7	04C8	04C9	04CA	04CB	04CC	04CD	04CE	04CF	04D0	04D1	04D2	04D3

Encoded Glyphs

Æ 04D4	æ 04D5	Ě 04D6	ě 04D7	Ə 04D8	ə 04D9	Ӗ 04DA	ӗ 04DB	Ӗ 04DC	ӗ 04DD	Ӛ 04DE	ӛ 04DF	Ӝ 04E0	ӝ 04E1
Ī 04E2	ī 04E3	Ï 04E4	ï 04E5	Ö 04E6	ö 04E7	Ө 04E8	ө 04E9	Ӗ 04EA	ӗ 04EB	Ӛ 04EC	ӛ 04ED	Ȳ 04EE	ȳ 04EF
ÿ 04F0	ÿ 04F1	Ÿ 04F2	ÿ 04F3	Ü 04F4	ü 04F5	ƒ 04F6	ƒ 04F7	Ȳ 04F8	ȳ 04F9	ƒ 04FA	ƒ 04FB	ƒ 04FC	ƒ 04FD
Ж 04FE	ж 04FF												

Cyrillic Supplement (0500-052F)

ɗ 0500	ɗ 0501	ɗ 0502	ɗ 0503	ɗ 0504	ɗ 0505	ɗ 0506	ɗ 0507	ɗ 0508	ɗ 0509	ɗ 050A	ɗ 050B	ɗ 050C	ɗ 050D
ɗ 050E	ɗ 050F	ɗ 0510	ɗ 0511	ɗ 0512	ɗ 0513	ɗ 0514	ɗ 0515	ɗ 0516	ɗ 0517	ɗ 0518	ɗ 0519	ɗ 051A	ɗ 051B
ɗ 051C	ɗ 051D	ɗ 051E	ɗ 051F	ɗ 0520	ɗ 0521	ɗ 0522	ɗ 0523	ɗ 0524	ɗ 0525	ɗ 0526	ɗ 0527	ɗ 0528	ɗ 0529

Encoded Glyphs

ДЖ	Дж	Дя	Дя	Лц	Лц
052A	052B	052C	052D	052E	052F

Phonetic Extensions (1D00–1D7F)

ə	ɸ	ɸ̣	ɸ̥	ɸ̧	ɸ̨	ɸ̩	ɸ̪	ɸ̫	ɸ̬	ɸ̭	ɸ̮
1D4A	1D6C	1D6D	1D6E	1D6F	1D70	1D71	1D72	1D73	1D74	1D75	1D76

Phonetic Extensions Supplement (1D80–1DBF)

ɸ̯	θ
1D91	1DBF

Combining Diacritical Marks Supplement (1DC0–1DFF)

˘	˘	˘	˘	˘	˘
1DC4	1DC5	1DC6	1DC7	1DC8	1DC9

Latin Extended Additional (1E00–1EFF)

Ḃ	ḃ	Ḅ	ḅ	Ḇ	ḇ	Ḉ	ḉ	Ḋ	ḋ	Ḍ	ḍ	Ḏ	ḏ	Ḑ	ḑ
1E02	1E03	1E04	1E05	1E0A	1E0B	1E0C	1E0D	1E0E	1E0F	1E12	1E13	1E1E	1E1F		
Ḣ	ḣ	Ḥ	ḥ	Ḭ	ḭ	Ḯ	ḹ	Ḻ	ḻ	Ḽ	ḽ	Ḿ	ḿ	Ṁ	ṁ
1E24	1E25	1E2E	1E2F	1E36	1E37	1E3C	1E3D	1E3E	1E3F	1E40	1E41	1E44	1E45		
Ṅ	ṅ	Ṇ	ṇ	Ṍ	ṍ	Ṏ	ṏ	Ṑ	ṑ	Ṓ	ṓ	Ṕ	ṕ	Ṗ	ṗ
1E46	1E47	1E4A	1E4B	1E4C	1E4D	1E50	1E51	1E52	1E53	1E54	1E55	1E56	1E57		



Encoded Glyphs

Ŕ	ŕ	Ŗ	ŗ	Ŝ	ŝ	Ť	ť	Ṛ	ṛ	Ṙ	ṙ	Ṛ	ṛ
1E5A	1E5B	1E60	1E61	1E62	1E63	1E6A	1E6B	1E6C	1E6D	1E6E	1E6F	1E70	1E71
Ũ	ũ	Ẁ	ẁ	Ẃ	ẃ	Ẅ	ẅ	Ẑ	ẑ	Ẓ	ẓ	Ẹ	Ẹ
1E78	1E79	1E80	1E81	1E82	1E83	1E84	1E85	1E92	1E93	1E9E	1EA0	1EA1	1EA2
Ǻ	Ǻ	ǻ	Ǽ	ǽ	ǿ	ǿ	Ǻ	ǻ	Ǽ	Ǿ	ǿ	Ǻ	ǻ
1EA3	1EA4	1EA5	1EA6	1EA7	1EA8	1EA9	1EAA	1EAB	1EAC	1EAD	1EAE	1EAF	1EB0
ǻ	Ǽ	ǽ	ǿ	ǿ	Ǻ	ǻ	Ǽ	Ǿ	ǿ	Ǻ	ǻ	Ǽ	ǽ
1EB1	1EB2	1EB3	1EB4	1EB5	1EB6	1EB7	1EB8	1EB9	1EBA	1EBB	1EBC	1EBD	1EBE
ǽ	ǿ	ǿ	Ǻ	ǻ	Ǽ	Ǿ	ǿ	Ǻ	ǻ	Ǽ	Ǿ	ǿ	Ǻ
1EBF	1EC0	1EC1	1EC2	1EC3	1EC4	1EC5	1EC6	1EC7	1EC8	1EC9	1ECA	1ECB	1ECC
Ǻ	Ǻ	ǻ	Ǽ	ǽ	ǿ	ǿ	Ǻ	ǻ	Ǽ	Ǿ	ǿ	Ǻ	ǻ
1ECD	1ECE	1ECF	1ED0	1ED1	1ED2	1ED3	1ED4	1ED5	1ED6	1ED7	1ED8	1ED9	1EDA
ǽ	ǿ	ǿ	Ǻ	ǻ	Ǽ	Ǿ	ǿ	Ǻ	ǻ	Ǽ	Ǿ	ǿ	Ǻ
1EDB	1EDC	1EDD	1EDE	1EDF	1EE0	1EE1	1EE2	1EE3	1EE4	1EE5	1EE6	1EE7	1EE8

Encoded Glyphs

Ú	Û	ù	Û	ú	Ũ	ũ	Ư	ư	Ỳ	ỳ	Ỵ	ỵ	Ỷ
1EE9	1EEA	1EEB	1EEC	1EED	1EEE	1EEF	1EF0	1EF1	1EF2	1EF3	1EF4	1EF5	1EF6
ý	ÿ	ÿ											
1EF7	1EF8	1EF9											

Greek Extended (1F00-1FFF)

á	á	ă	ă	ǎ	ǎ	ǎ	ǎ	À	À	”À	”À	”À	”À
1F00	1F01	1F02	1F03	1F04	1F05	1F06	1F07	1F08	1F09	1F0A	1F0B	1F0C	1F0D
Ǻ	Ǻ	é	é	ë	ë	ë	ë	’E	’E	”E	”E	”E	”E
1F0E	1F0F	1F10	1F11	1F12	1F13	1F14	1F15	1F18	1F19	1F1A	1F1B	1F1C	1F1D
ή	ή	ή	ή	ή	ή	ή	ή	’H	’H	”H	”H	”H	”H
1F20	1F21	1F22	1F23	1F24	1F25	1F26	1F27	1F28	1F29	1F2A	1F2B	1F2C	1F2D
”H	”H	í	í	ì	ì	ì	ì	ĩ	ĩ	’I	’I	”I	”I
1F2E	1F2F	1F30	1F31	1F32	1F33	1F34	1F35	1F36	1F37	1F38	1F39	1F3A	1F3B
”I	”I	’I	’I	ó	ó	ö	ö	ö	ö	’O	’O	”O	”O
1F3C	1F3D	1F3E	1F3F	1F40	1F41	1F42	1F43	1F44	1F45	1F48	1F49	1F4A	1F4B

Encoded Glyphs

”O	“O	Ó	Ô	Û	Ü	Ũ	Û	Û	Û	”Y	“Y	”Y	”Y
1F4C	1F4D	1F50	1F51	1F52	1F53	1F54	1F55	1F56	1F57	1F59	1F5B	1F5D	1F5F
Ű	Ű	Ű	Ű	Ű	Ű	Ű	Ű	’Œ	’Œ	”Œ	“Œ	”Œ	”Œ
1F60	1F61	1F62	1F63	1F64	1F65	1F66	1F67	1F68	1F69	1F6A	1F6B	1F6C	1F6D
”Œ	”Œ	à	á	è	é	ή	ή	ì	í	ò	ó	ù	ú
1F6E	1F6F	1F70	1F71	1F72	1F73	1F74	1F75	1F76	1F77	1F78	1F79	1F7A	1F7B
ŵ	ŵ	à	á	ä	ä	ä	ä	ä	ä	À	À	”À	”À
1F7C	1F7D	1F80	1F81	1F82	1F83	1F84	1F85	1F86	1F87	1F88	1F89	1F8A	1F8B
”À	”À	”À	”À	ή	ή	ñ	ñ	ñ	ñ	ñ	ñ	’H	’H
1F8C	1F8D	1F8E	1F8F	1F90	1F91	1F92	1F93	1F94	1F95	1F96	1F97	1F98	1F99
”H	”H	”H	”H	”H	”H	ŵ	ŵ	Ű	Ű	Ű	Ű	Ű	Ű
1F9A	1F9B	1F9C	1F9D	1F9E	1F9F	1FA0	1FA1	1FA2	1FA3	1FA4	1FA5	1FA6	1FA7
’Œ	’Œ	”Œ	”Œ	”Œ	”Œ	”Œ	”Œ	ǎ	ā	à	α	á	ã
1FA8	1FA9	1FAA	1FAB	1FAC	1FAD	1FAE	1FAF	1FB0	1FB1	1FB2	1FB3	1FB4	1FB6

Encoded Glyphs

ã	Ǻ	Ā	Ȧ	Ȧ	Ȧ	'	˘	'	˜	˝	ḥ	ḥ	ḥ
1FB7	1FB8	1FB9	1FBA	1FBB	1FBC	1FBD	1FBE	1FBF	1FC0	1FC1	1FC2	1FC3	1FC4
ñ	ñ	Ǝ	Ǝ	Ɔ	Ɔ	Ɔ	˝	˝	˝	ı	ı	ı	ı
1FC6	1FC7	1FC8	1FC9	1FCA	1FCB	1FCC	1FCD	1FCE	1FCF	1FD0	1FD1	1FD2	1FD3
ı	ı	ı	ı	ı	ı	˝	˝	˝	ŭ	ū	ù	ú	ρ
1FD6	1FD7	1FD8	1FD9	1FDA	1FDB	1FDD	1FDE	1DF	1FE0	1FE1	1FE2	1FE3	1FE4
ρ	ū	ū	Ÿ	Ÿ	Ƴ	Ƴ	Ƴ	˝	˝	'	ù	ω	ώ
1FE5	1FE6	1FE7	1FE8	1FE9	1FEA	1FEB	1FEC	1FED	1FEE	1FEF	1FF2	1FF3	1FF4
ŵ	ŵ	Ɔ	Ɔ	Ɔ	Ɔ	Ɔ	'	'					
1FF6	1FF7	1FF8	1FF9	1FFA	1FFB	1FFC	1FFD	1FFE					

General Punctuation (2000-206F)

			/	ˆ	ˆ	ˆ	ˆ	—	—	—	—	//	'	'
2007	2008	200B	200C	200D	200E	200F	2012	2013	2014	2015	2016	2018	2019	
,	“	”	„	†	‡	•	…	‰	<	>	˘	/	7	
201A	201C	201D	201E	2020	2021	2022	2026	2030	2039	203A	203F	2044	204A	

## Encoded Glyphs

### Superscripts and Subscripts (2070-209F)

0 2070	4 2074	5 2075	6 2076	7 2077	8 2078	9 2079	+ 207A	- 207B	= 207C	( 207D	) 207E	<i>n</i> 207F	0 2080
1 2081	2 2082	3 2083	4 2084	5 2085	6 2086	7 2087	8 2088	9 2089	+ 208A	- 208B	= 208C	( 208D	) 208E

### Currency Symbols (20A0-20CF)

¢ 20A1	₣ 20A6	₤ 20A9	₶ 20AA	₧ 20AB	€ 20AC	₨ 20AF	₪ 20B4	₹ 20B9	₺ 20BA	₦ 20BD
-----------	-----------	-----------	-----------	-----------	-----------	-----------	-----------	-----------	-----------	-----------

### Letterlike Symbols (2100-214F)

g 210A	ℓ 2113	№ 2116	™ 2122	Ω 2126	e 212E
-----------	-----------	-----------	-----------	-----------	-----------

### Number Forms (2150-218F)

1/3 2153	2/3 2154	1/5 2155	2/5 2156	3/5 2157	4/5 2158	1/6 2159	5/6 215A	1/8 215B	3/8 215C	5/8 215D	7/8 215E	1/ 215F
-------------	-------------	-------------	-------------	-------------	-------------	-------------	-------------	-------------	-------------	-------------	-------------	------------

### Arrows (2190-21FF)

← 2190	↑ 2191	→ 2192	↓ 2193	↩ 21E6	↗ 21E7	⇒ 21E8	⇩ 21E9	⇧ 21EA
-----------	-----------	-----------	-----------	-----------	-----------	-----------	-----------	-----------

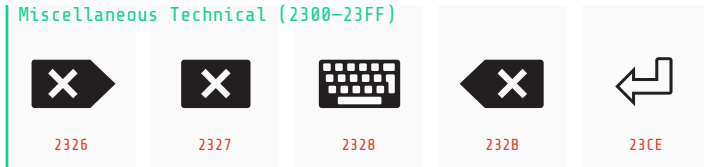
### Mathematical Operators (2200-22FF)

∂ 2202	∅ 2205	Δ 2206	∏ 220F	Σ 2211	- 2212	/ 2215	· 2219	√ 221A	∞ 221E	∫ 222B	≈ 2248	≠ 2260	≤ 2264
-----------	-----------	-----------	-----------	-----------	-----------	-----------	-----------	-----------	-----------	-----------	-----------	-----------	-----------

## Encoded Glyphs



### Miscellaneous Technical (2300-23FF)



### Geometric Shapes (25A0-25FF)



### Miscellaneous Mathematical Symbols-B (2980-29FF)



### Latin Extended-C (2C60-2C7F)



### Latin Extended-D (A720-A7FF)



### Latin Extended-E (AB30-AB6F)

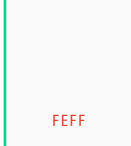


## Encoded Glyphs

### Alphabetic Presentation Forms (FB00-FB4F)



### Arabic Presentation Forms-B (FE70-FEFF)



## Unencoded Glyphs

### Small Capitals

Ć	Ń	Ó	Ś	Ż	ɑ	β	Χ	Ɖ	Ƒ	Ƴ	Ƨ	Ɔ	Ƨ
cacute.sc.loclPLK	nacute.sc.loclPLK	oacute.sc.loclPLK	sacute.sc.loclPLK	zacute.sc.loclPLK	Alpha-latin.sc	Beta-latin.sc	Chi-latin.sc	Dafrican.sc	Fhook.sc	Gammaafrican.sc	Hhook.sc	Hturned.sc	Hwair.sc
Ɓ	Ƈ	Ǝ	Ʒ	Ω	Ɣ	ƚ	Ɔ	Ɔ	Á	Ǻ	Ǻ	Ǻ	Ǻ
Iotaaffrican.sc	Jcrossedtail.sc	Lbelt.sc	Nlongrightleg.sc	Omega-latin.sc	Rsmall.sc	Rtail.sc	Upsilonafrican.sc	a.sc	aacute.sc	abreve.sc	abreveacute.sc	abrevedotbelow.sc	abrevegrave.sc
Ǻ	Ǻ	Ǻ	Â	Á	Ā	À	Ǻ	Ǻ	Ǻ	Ä	Ä	À	À
abrevehookabove.sc	abrevetilde.sc	acaron.sc	acircum-ex.sc	acircum-exacute.sc	acircum-exdotbelow.sc	acircum-exgrave.sc	acircum-exhookabove.sc	acircum-extilde.sc	adblgrave.sc	adieresis.sc	adieresismacron.sc	adotaccent.sc	adotbelow.sc
Ā	À	Ǻ	Â	ɑ	Ā	Ą	Å	Ǻ	Ǻ	Ǻ	Æ	É	Ē
adotmacron.sc	agrave.sc	ahookabove.sc	ainvertedbreve.sc	alpha-latin.sc	amacron.sc	aogonek.sc	aring.sc	aringacute.sc	astroke.sc	atilde.sc	ae.sc	aeacute.sc	aemacron.sc
Ɓ	Ǻ	Ǻ	Ɓ	Ɓ	Ɓ	Ɔ	Ć	Č	Ç	Ĉ	Ċ	Ƈ	Ƈ
b.sc	bdotaccent.sc	bdotbelow.sc	bhook.sc	bstroke.sc	btopbar.sc	c.sc	cacute.sc	ccaron.sc	ccedilla.sc	ccircum-ex.sc	cdotaccent.sc	chook.sc	cstroke.sc
Ɖ	Ɖ	Ǻ	Ɖ	Ɖ	Ɖ	Ɖ	Ɖ	Ɖ	Ɖ	DZ	DŽ	E	É
d.sc	eth.sc	dcaron.sc	dcircum-exbelow.sc	dcroat.sc	ddotbelow.sc	dhook.sc	dlinebelow.sc	dtilde.sc	dtopbar.sc	dz.sc	dzcaron.sc	e.sc	eacute.sc
Ǻ	Ǻ	Ǝ	Ê	É	Ě	È	Ǻ	Ǻ	È	Ë	È	Ǝ	È
ebreve.sc	ecaron.sc	ecedilla.sc	ecircum-ex.sc	ecircum-exacute.sc	ecircum-exdotbelow.sc	ecircum-exgrave.sc	ecircum-exhookabove.sc	ecircum-extilde.sc	edblgrave.sc	edieresis.sc	edotaccent.sc	edotbelow.sc	egrave.sc



## Unencoded Glyphs

É	Ê	Ē	Ę	Ɛ	Ǝ	Σ	Ʒ	Ẽ	Ə	Ə	Ʒ	Ž	Ʒ
ehookabove.sc	einvertedbreve.sc	emacron.sc	eogonek.sc	eopen.sc	ereversed.sc	esh.sc	estroke.sc	etilde.sc	eturned.sc	schwa.sc	ezh.sc	ezhcaron.sc	ezhreversed.sc
F	FI	FL	Ħ	FI	FL	G	Ĝ	Ǧ	Ǧ	Ĝ	Ĝ	Ĝ	Ĝ
f.sc	f_i.sc	f_l.sc	fdotaccent.sc	fi.sc	fl.sc	g.sc	gacute.sc	gbreve.sc	gcaron.sc	gcircum-ex.sc	gcommaaccent.sc	gdotaccent.sc	ghook.sc
ʔ	Ġ	Ʒ	H	Ĥ	ĥ	Ĥ	Ḥ	I	I	Í	İ	Ĭ	Î
glottalstop.sc	gstroke.sc	yogh.sc	h.sc	hbar.sc	hcaron.sc	hcircum-ex.sc	hdotbelow.sc	i.sc	idotless.sc	iacute.sc	ibreve.sc	icaron.sc	icircum-ex.sc
İ	İ	İ	İ	!	Ì	Ì	Î	IJ	Ī	Ĳ	†	Ĩ	J
idblgrave.sc	idieresis.sc	idieresisacute.sc	idotaccent.sc	idotbelow.sc	igrave.sc	ithookabove.sc	iinvertedbreve.sc	ij.sc	imacron.sc	iogonek.sc	istroke.sc	itilde.sc	j.sc
Ĵ	ƶ	K	Ķ	Ɔ	K	K	L	Ĺ	Ł	Ł	Ł	Ł	Ł
jcircum-ex.sc	jstroke.sc	k.sc	kcaron.sc	kcommaaccent.sc	kgreenlandic.sc	khook.sc	l.sc	lacute.sc	lbar.sc	lcaron.sc	lcircum-exbelow.sc	lcommaaccent.sc	ldot.sc
Ł	LJ	Ł	M	Ā	Ā	W	N	Ń	N	Ñ	Ñ	Ñ	Ñ
ldotbelow.sc	lj.sc	lslash.sc	m.sc	macute.sc	mdotaccent.sc	mturned.sc	n.sc	nacute.sc	napostrophe.sc	ncaron.sc	ncircum-exbelow.sc	ncommaaccent.sc	ndotaccent.sc
Ŋ	Ŋ	Ŋ	Ŋ	NJ	Ñ	O	Ó	Ø	Ǿ	Ǿ	Ô	Õ	Ô
ndotbelow.sc	ngrave.sc	eng.sc	nhookleft.sc	nj.sc	ntilde.sc	o.sc	oacute.sc	obarred.sc	obreve.sc	ocaron.sc	ocircum-ex.sc	ocircum-exacute.sc	ocircum-exdotbelow.sc

Unencoded Glyphs

Ŏ	Ŏ̂	Ŏ̃	Ŏ̄	Ö	Ȫ	Ò	Ò̄	Ọ	Ò	Ỏ	Ơ	Ớ	Ợ
ocircum-exgrave.sc	ocircum-exhookabove.sc	ocircum-tilde.sc	odblgrave.sc	odieresis.sc	odieresismacron.sc	odotaccent.sc	odotaccentmacron.sc	odotbelow.sc	ograve.sc	ohookabove.sc	ohorn.sc	ohornacute.sc	ohorndotbelow.sc
Ờ	Ở	Ỡ	Ő	Œ	Ô	Ō	Ṓ	Ṑ	Ɔ	Ȫ	Ɔ	Ø	Ǿ
ohorngrave.sc	ohornhookabove.sc	ohorntilde.sc	ohungarumlaut.sc	ot.sc	oinvertedbreve.sc	omacron.sc	omacronacute.sc	omacrongrave.sc	oogonek.sc	oogonekmacron.sc	oopen.sc	oslash.sc	oslashacute.sc
Õ	Ṍ	Ȭ	Ȫ	Œ	Ɔ	Ɔ́	Ɔ̀	Ɔ	Ɔ	Ɔ	Ɔ	Ɔ	Ɔ́
otilde.sc	otildeacute.sc	otildemacron.sc	ou.sc	oe.sc	p.sc	pacute.sc	pdotaccent.sc	phook.sc	thorn.sc	q.sc	qhooktail.sc	r.sc	racute.sc
Ř	Ŕ	Ř̄	Ŕ̄	Ŕ	Ŕ̂	Ŕ	Ŕ	Ŕ	Ŕ	Ŕ	Ŕ	Ŕ	Ŕ
rcaron.sc	rcommaaccent.sc	rdblgrave.sc	rdotbelow.sc	rhook.sc	rinvertedbreve.sc	rstroke.sc	s.sc	sacute.sc	scaron.sc	scedilla.sc	scircum-ex.sc	scommaaccent.sc	sdotaccent.sc
Ş	ß	Ƨ	Ƨ̄	Ƨ	Ƨ̂	Ƨ	Ƨ	Ƨ	Ƨ	Ƨ	Ƨ	Ƨ	Ƨ
sdotbelow.sc	germandbls.sc	t.sc	tbar.sc	tcaron.sc	tcedilla.sc	tcircum-exbelow.sc	tcommaaccent.sc	tdiagonalstroke.sc	tdotaccent.sc	tdotbelow.sc	thook.sc	tlinebelow.sc	tone-ve.sc
Ƨ	Ƨ	Ƨ	Ƨ	Ƨ	Ƨ	Ƨ	Ƨ	Ƨ	Ƨ	Ƨ	Ƨ	Ƨ	Ƨ
tonesix.sc	tonetwo.sc	tretro-exhook.sc	u.sc	uacute.sc	ubar.sc	ubreve.sc	ucaron.sc	ucircum-ex.sc	udblgrave.sc	udieresis.sc	udieresisacute.sc	udieresiscaron.sc	udieresisgrave.sc
Ū	Ū	Ū	Ū	Ū	Ū	Ū	Ū	Ū	Ū	Ū	Ū	Ū	Ū
udieresismacron.sc	udotbelow.sc	ugrave.sc	uhookabove.sc	uhorn.sc	uhornacute.sc	uhorndotbelow.sc	uhorngrave.sc	uhornhookabove.sc	uhorntilde.sc	uhungarumlaut.sc	uinvertedbreve.sc	umacron.sc	ugonek.sc

## Unencoded Glyphs

Ů	Ũ	Ů	V	U	Λ	W	Ű	Ű	Ű	Ű	W	P	X
uring.sc	utilde.sc	utildeacute.sc	v.sc	whook.sc	vturnd.sc	w.sc	wacute.sc	wcircum-ex.sc	wdieresis.sc	wgrave.sc	whook.sc	wynn.sc	x.sc
Y	Ý	Û	ÿ	Y	Y	Y	Y	Y	Y	Y	Z	Z	Z
y.sc	yacute.sc	ycircum-ex.sc	ydieresis.sc	ydotbelow.sc	ygrave.sc	yhook.sc	yhookabove.sc	ymacron.sc	ystroke.sc	ytilde.sc	z.sc	zacute.sc	zcaron.sc
Ž	ž	ž	ž	ƀ	Ɔ	Ɔ	Ч	Б	А	Б	В	Г	Г
zdotaccent.sc	zdotbelow.sc	zhook.sc	zstroke.sc	Rtail.sc.ss01	eng.sc.ss01	nhookleft.sc.ss01	Hturned.sc.ss02	bhook.sc.ss02	a-cy.sc	be-cy.sc	ve-cy.sc	ge-cy.sc	gje-cy.sc
Г	Д	Е	È	Ë	Ж	З	И	Й	Й	Й	К	К	Л
gheupturn-cy.sc	de-cy.sc	ie-cy.sc	iegrave-cy.sc	io-cy.sc	zhe-cy.sc	ze-cy.sc	ii-cy.sc	iishort-cy.sc	iigrave-cy.sc	iishorttail-cy.sc	ka-cy.sc	kje-cy.sc	el-cy.sc
М	Н	О	П	Р	С	Т	У	Û	Ф	Х	Ч	Ц	Ш
em-cy.sc	en-cy.sc	o-cy.sc	pe-cy.sc	er-cy.sc	es-cy.sc	te-cy.sc	u-cy.sc	ushort-cy.sc	ef-cy.sc	ha-cy.sc	che-cy.sc	tse-cy.sc	sha-cy.sc
Щ	Ц	Ь	Ъ	Ы	Ь	Ь	Ѕ	Є	Э	І	İ	Ј	Ћ
shcha-cy.sc	dzhe-cy.sc	softsign-cy.sc	hardsign-cy.sc	yeru-cy.sc	lje-cy.sc	nje-cy.sc	dze-cy.sc	e-cy.sc	ereversed-cy.sc	i-cy.sc	yi-cy.sc	jje-cy.sc	tshe-cy.sc
Ю	Я	Ђ	Ω	Ђ	Є	Λ	Λ	Ж	Ж	Ž	Ψ	Θ	V
iu-cy.sc	ia-cy.sc	dje-cy.sc	omega-cy.sc	yat-cy.sc	etioti-ed-cy.sc	yuslittle-cy.sc	yuslittleioti-ed-cy.sc	yusbig-cy.sc	yusbigioti-ed-cy.sc	kst-cy.sc	psi-cy.sc	ta-cy.sc	izhtsa-cy.sc

## Unencoded Glyphs

Û	ΟΥ	ƒ	Ѓ	Ж	Ʒ	Қ	К	К	К	Ң	Н	Ц	П
izhitsadblgrave-cy.sc	uk-cy.sc	ghestroke-cy.sc	ghemiddlehook-cy.sc	zhedescender-cy.sc	zedescender-cy.sc	kadescender-cy.sc	kaverticallstroke-cy.sc	kastroke-cy.sc	kabashkir-cy.sc	endescender-cy.sc	enghe-cy.sc	pedescender-cy.sc	pemiddlehook-cy.sc
Զ	Շ	Տ	Կ	Մ	Պ	Ս	Շ	հ	հ	Ե	Ե	Լ	Ջ
haabkhasian-cy.sc	esdescender-cy.sc	tedescender-cy.sc	ustrait-cy.sc	ustraitstroke-cy.sc	hadescender-cy.sc	chedescender-cy.sc	cheverticalstroke-cy.sc	shha-cy.sc	shhadescender-cy.sc	cheabkhasian-cy.sc	chedescenderabkhasian-	palochka-cy.sc	zhebreve-cy.sc
Қ	Л	Н	Ң	Ч	М	Ӑ	Ӓ	Æ	Ӗ	ə	ӓ	Ӗ	Ӛ
kahook-cy.sc	eltail-cy.sc	enhook-cy.sc	entail-cy.sc	chekkhasian-cy.sc	emtail-cy.sc	abreve-cy.sc	adieresis-cy.sc	aie-cy.sc	iebreve-cy.sc	schwa-cy.sc	schwadieresis-cy.sc	zheadieresis-cy.sc	zedieresis-cy.sc
З	Й	Ӣ	Ӧ	Ө	Ӧ	Ӛ	Ӝ	Ӟ	Ӡ	Ӣ	Ӥ	Ӧ	Ӧ
dzeabkhasian-cy.sc	imacron-cy.sc	idieresis-cy.sc	odieresis-cy.sc	obarred-cy.sc	obarreddieresis-cy.sc	edieresis-cy.sc	umacron-cy.sc	udieresis-cy.sc	uhungarumlaut-cy.sc	chedieresis-cy.sc	gedescender-cy.sc	yerudieresis-cy.sc	gestrokehook-cy.sc
Х	Ж	Ը	Թ	Ր	Ց	Լ	Խ	Զ	Ծ	Է	Լ	Լ	Թ
hahook-cy.sc	hastroke-cy.sc	komide-cy.sc	komidje-cy.sc	komizje-cy.sc	komidje-cy.sc	komilje-cy.sc	kominjje-cy.sc	komisje-cy.sc	komltje-cy.sc	reverssedze-cy.sc	elhook-cy.sc	lha-cy.sc	rha-cy.sc
Ӑ	Q	W	К	Л	Н	Ӧ	Р	Д	Д	Ц	Н	А	В
yae-cy.sc	qa-cy.sc	we-cy.sc	aleutka-cy.sc	elmidlehook-cy.sc	enmidlehook-cy.sc	semisoftsign-cy.sc	ertick-cy.sc	dche-cy.sc	dzhe-cy.sc	eldescender-cy.sc	enlefthook-cy.sc	alpha.sc	beta.sc
Г	Δ	Ε	Ζ	Η	Θ	Ι	Κ	Λ	Μ	Ν	Ξ	Ο	Π
gamma.sc	delta.sc	epsilon.sc	zeta.sc	eta.sc	theta.sc	iota.sc	kappa.sc	lambda.sc	mu.sc	nu.sc	xi.sc	omicron.sc	pi.sc

Unencoded Glyphs

<b>ρ</b> rho.sc	<b>σ</b> sigma-na1.sc	<b>Σ</b> sigma.sc	<b>τ</b> tau.sc	<b>Υ</b> upsilon.sc	<b>Φ</b> phi.sc	<b>χ</b> chi.sc	<b>ψ</b> psi.sc	<b>Ω</b> omega.sc	<b>ι</b> iotatonos.sc	<b>ϊ</b> iotadieresis.sc	<b>Ϸ</b> iotadierestonos.sc	<b>Ϛ</b> upsilontonos.sc	<b>ϛ</b> upsilondieresis.sc
<b>Ϝ</b> upsilondierestonos.sc	<b>ο</b> omicrontonos.sc	<b>Ω</b> omegatonos.sc	<b>Α</b> alphatonos.sc	<b>Ε</b> epsilontonos.sc	<b>Η</b> etatonos.sc	<b>Ϟ</b> heta.sc	<b>Ϝ</b> archaicampi.sc	<b>Ϟ</b> pamphylidigamma.sc	<b>Ϛ</b> sigmaLunateReversedSymbo	<b>ϛ</b> sigmaLunateDottedSymbol	<b>Ϝ</b> sigmaLunateDottedReverse	<b>Ϟ</b> koppaArchaic.sc	<b>Ϛ</b> stigma.sc
<b>Ϟ</b> digamma.sc	<b>Ϟ</b> koppa.sc	<b>Ϟ</b> ampi.sc	<b>Ϟ</b> kaiSymbol.sc	<b>β</b> betaSymbol.sc	<b>θ</b> thetaSymbol.sc	<b>Ϛ</b> UpsilonhookSymbol.sc	<b>ϛ</b> UpsilonacutehookSymbol.s	<b>Ϝ</b> UpsilondieresishookSymbo	<b>Ϟ</b> phiSymbol.sc	<b>π</b> piSymbol.sc	<b>κ</b> kappaSymbol.sc	<b>ρ</b> rhoSymbol.sc	<b>σ</b> sigmaLunateSymbol.sc
<b>Ϛ</b> yot.sc	<b>ϛ</b> epsilonLunateSymbol.sc	<b>Ϟ</b> sho.sc	<b>Μ</b> san.sc	<b>Ϟ</b> rhoStrokeSymbol.sc	<b>Α</b> alphasili.sc	<b>Α</b> alphadasia.sc	<b>Α</b> alphasilivaria.sc	<b>Α</b> alphadastavaria.sc	<b>Α</b> alphasilioxia.sc	<b>Α</b> alphadasiaoxia.sc	<b>Α</b> alphasiliperispomeni.sc	<b>Α</b> alphadasiaperispomeni.sc	<b>Α</b> alphavaria.sc
<b>Α</b> alphaoxia.sc	<b>Α</b> alphaperispomeni.sc	<b>Α</b> alphavachy.sc	<b>Α</b> alphamacron.sc	<b>Α</b> alphapogegrameni.sc	<b>Α</b> alphavariapogegrameni	<b>Α</b> alphaoxiapogegrameni.s	<b>Α</b> alphasilipogegrameni	<b>Α</b> alphadasiapogegrameni	<b>Α</b> alphasilivariapogegram	<b>Α</b> alphadastavariapogegram	<b>Α</b> alphasilioxiapogegram	<b>Α</b> alphadasiaoxiapogegram	<b>Α</b> alphasiliperispomeniypo
<b>Α</b> alphadasiaperispomeniypo	<b>Α</b> alphaperispomeniypogera	<b>Ε</b> epsilonsili.sc	<b>Ε</b> epsilondasia.sc	<b>Ε</b> epsilonsilivaria.sc	<b>Ε</b> epsilondastavaria.sc	<b>Ε</b> epsilonsilioxia.sc	<b>Ε</b> epsilondastaoxia.sc	<b>Ε</b> epsilonvaria.sc	<b>Ε</b> epsilonoxia.sc	<b>Η</b> etapsili.sc	<b>Η</b> etadasia.sc	<b>Η</b> etapsilivaria.sc	<b>Η</b> etadastavaria.sc
<b>Η</b> etapsilioxia.sc	<b>Η</b> etadasiaoxia.sc	<b>Η</b> etapsiliperispomeni.sc	<b>Η</b> etadasiaperispomeni.sc	<b>Η</b> etavaria.sc	<b>Η</b> etaoxia.sc	<b>Η</b> etaperispomeni.sc	<b>Η</b> etaypogegrameni.sc	<b>Η</b> etavariapogegrameni.sc	<b>Η</b> etaoxiapogegrameni.sc	<b>Η</b> etapsilipogegrameni.sc	<b>Η</b> etadasiapogegrameni.sc	<b>Η</b> etapsilivariapogegramme	<b>Η</b> etadastavariapogegramme

Unencoded Glyphs

H	H	H	H	H	I	I	I	I	I	I	I	I	I
etapsiltoxiaypogegrammen	etadasiaoxiaypogegrammen	etapsiliperispomenitypoge	etadasiaiperispomenitypoge	etaperispomenitypogegramm	iotapsili.sc	iotadasia.sc	iotapsilivaria.sc	iotadasiaivaria.sc	iotapsilioxia.sc	iotadasiaoxia.sc	iotapsiliperispomeni.sc	iotadasiaiperispomeni.sc	iotavaria.sc
I	I	I	I	I	I	I	O	O	O	O	O	O	O
iotaoxia.sc	iotaperispomeni.sc	iotavrachy.sc	iotamacron.sc	iotodialytikavaria.sc	iotodialytikaoxia.sc	iotodialytikaperispomeni	omicronpsili.sc	omicrondasia.sc	omicronpsilivaria.sc	omicrondasiaivaria.sc	omicronpsilioxia.sc	omicrondasiaoxia.sc	omicronvaria.sc
O	P	P	Y	Y	Y	Y	Y	Y	Y	Y	Y	Y	Y
omicronoxia.sc	rhopsili.sc	rhodasia.sc	upslonpsili.sc	upslondasia.sc	upslonpsilivaria.sc	upslondasiaivaria.sc	upslonpsilioxia.sc	upslondasiaoxia.sc	upslonpsiliperispomeni	upslondasiaiperispomeni	upslonvaria.sc	upslonoxia.sc	upslonperispomeni.sc
Y	Y	Y	Y	Y	Ω	Ω	Ω	Ω	Ω	Ω	Ω	Ω	Ω
upslonvrachy.sc	upslonmacron.sc	upslondialytikavaria.sc	upslondialytikaoxia.sc	upslondialytikaperispom	omegapsili.sc	omegadasia.sc	omegapsilivaria.sc	omegadasiaivaria.sc	omegapsilioxia.sc	omegadasiaoxia.sc	omegapsiliperispomeni.sc	omegadasiaiperispomeni.sc	omegavaria.sc
Ω	Ω	Ω	Ω	Ω	Ω	Ω	Ω	Ω	Ω	Ω	Ω	Ω	Ω
omegaoxia.sc	omegaperispomeni.sc	omegaypogegrammen.sc	omegavariaypogegrammeni	omegaoxiaypogegrammeni	omegapsiliypogegrammeni	omegadasiaypogegrammeni	omegapsilivariaypogegram	omegadasiavariaypogegram	omegapsilioxiiypogegramm	omegadasiioxiiypogegramm	omegapsiliperispomeniypo	omegadasiaperispomeniypo	omegaperispomeniypogegra
/	..	.	˘	˘	ˆ	ˆ	˘	˘	o	~	-	,	3
acute.sc.loclPLX	dieresiscomb.sc	dotaccentcomb.sc	gravecomb.sc	acutecomb.sc	hungarumlautcomb.sc	circum-excomb.sc	caroncomb.sc	brevecomb.sc	ringcomb.sc	tildecomb.sc	macroncomb.sc	commaaccentcomb.sc	cedillacomb.sc
Ꞁ	˘	˘	˘	ˆ	ˆ	..	.	˘	ˆ	-	o	Ꞁ	Ꞁ
ogonekcomb.sc	acute.sc	breve.sc	caron.sc	cedilla.sc	circum-ex.sc	dieresis.sc	dotaccent.sc	grave.sc	hungarumlaut.sc	macron.sc	ogonek.sc	ring.sc	ogonek.thin.sc

## Unencoded Glyphs

~	˘	I
tilde.sc	breve-cy.sc	uniA7AE.sc

## Case Sensitive Forms

i	¿	{	}	[	]	(	)	—	—	-	-	«	»
exclamdown.case	questiondown.case	braceleft.case	braceright.case	bracketleft.case	bracketright.case	parenleft.case	parenright.case	emdash.case	endash.case	hyphen.case	softhyphen.case	guillemetleft.case	guillemetright.case
<	>	∞	¨	·	˘	˙	“	ˆ	˘	˘	◊	˜	—
guilsingleft.case	guilsingright.case	infinity.case	dieresiscomb.case	dotaccentcomb.case	gravecomb.case	acutecomb.case	hungarumlautcomb.case	circum-excomb.case	caroncomb.case	brevecomb.case	ringcomb.case	tildecomb.case	macroncomb.case
?	“	,	,	¸	˙	˘	˘	˘	˘	¨	·	˘	“
hookabovecomb.case	dblgravecomb.case	horncomb.case	commaaccentcomb.case	cedillacomb.case	acute.case	breve.case	caron.case	cedilla.case	circum-ex.case	dieresis.case	dotaccent.case	grave.case	hungarumlaut.case
—	◊	˜	˙	˙	˙	˙	˙	˙	˙	˙	˙	˙	˙
macron.case	ring.case	tilde.case	acute.case.loc1PLK	tonos.case	psili.case	dasia.case	psilivaria.case	dasiavaria.case	psilloxia.case	daslaoxia.case	psiliperisopomenl.case	dasiaperisopomenl.case	varia.case
˙	˘	˘	˘	˘	˘	˘	˘	˘	˘	˘	˘	˘	˘
oxia.case	breve-cy.case	breveacute.case	brevegrave.case	brevehookabove.case	brevetilde.case	circum-exacute.case	circum-exgrave.case	circum-exhookabove.case	circum-extilde.case	dieresisacutecomb.case	dieresisgravecomb.case	dieresiscaroncomb.case	dieresismacroncomb.case
˘	˘	˘	˘	˘									
tildeacute.case	macrongravesingle.case	macronacutesingle.case	dotmacroncomb.case	ringacutecomb.case									

## Unencoded Glyphs

### Localized Forms

*i*

`idotaccent`

### Ligatures

*ff*

`f_f`

*ffi*

`f_f_i`

*ffj*

`f_f_j`

*ffl*

`f_f_l`

*ffl*

`f_f_t`

*fi*

`f_i`

*fi*

`f_j`

*fl*

`f_l`

*ft*

`f_t`

### Denominators

0

`zero.dnom`

1

`one.dnom`

2

`two.dnom`

3

`three.dnom`

4

`four.dnom`

5

`-ve.dnom`

6

`six.dnom`

7

`seven.dnom`

8

`eight.dnom`

9

`nine.dnom`

(

`parenleft.dnom`

)

`parenright.dnom`

+

`plus.dnom`

-

`minus.dnom`

=

`equal.dnom`

### Numerators

0

`zero.numr`

1

`one.numr`

2

`two.numr`

3

`three.numr`

4

`four.numr`

5

`-ve.numr`

6

`six.numr`

7

`seven.numr`

8

`eight.numr`

9

`nine.numr`

(

`parenleft.numr`

)

`parenright.numr`

+

`plus.numr`

-

`minus.numr`

=

`equal.numr`

### Slashed Zero

0

`zero.zero`

0

`zero.osf.zero`

0

`zero.tf.zero`

0

`zero.tosf.zero`



## Unencoded Glyphs

### Old Style Figures (Proportional)

0 zero.osf	1 one.osf	2 two.osf	3 three.osf	4 four.osf	5 -ve.osf	6 six.osf	7 seven.osf	8 eight.osf	9 nine.osf	# numbersign.osf	- -guredash.osf	ß baht.osf	ç cent.osf
Ø colonsign.osf	¤ currency.osf	\$ dollar.osf	₲ dong.osf	₯ drachma.osf	€ euro.osf	₴ hryvnia.osf	₺ liraTurkish.osf	₱ naira.osf	₽ ruble.osf	₹ rupeeIndian.osf	₪ sheqel.osf	£ sterling.osf	₩ won.osf
¥ yen.osf	+plus.osf	- minus.osf	× multiply.osf	÷ divide.osf	= equal.osf	≠ notequal.osf	> greater.osf	< less.osf	≥ greaterequal.osf	≤ lessequal.osf	± plusminus.osf	≈ approxequal.osf	~ asciitilde.osf
¬ logicalnot.osf	∞ in-nity.osf	∫ integral.osf	∏ product.osf	∑ summation.osf	√ radical.osf	∂ partialdiff.osf	% percent.osf	‰ perthousand.osf	◊ lozenge.osf	§ section.osf	° degree.osf	† dagger.osf	‡ daggerdbl.osf

### Old Style Figures (Tabular)

0 zero.tosf	1 one.tosf	2 two.tosf	3 three.tosf	4 four.tosf	5 -ve.tosf	6 six.tosf	7 seven.tosf	8 eight.tosf	9 nine.tosf	# numbersign.tosf	- -guredash.tosf	ß baht.tosf	ç cent.tosf
Ø colonsign.tosf	¤ currency.tosf	\$ dollar.tosf	₲ dong.tosf	₯ drachma.tosf	€ euro.tosf	₴ hryvnia.tosf	₺ liraTurkish.tosf	₱ naira.tosf	₽ ruble.tosf	₹ rupeeIndian.tosf	₪ sheqel.tosf	£ sterling.tosf	₩ won.tosf
¥ yen.tosf	+plus.tosf	- minus.tosf	× multiply.tosf	÷ divide.tosf	= equal.tosf	≠ notequal.tosf	> greater.tosf	< less.tosf	≥ greaterequal.tosf	≤ lessequal.tosf	± plusminus.tosf	≈ approxequal.tosf	~ asciitilde.tosf

## Unencoded Glyphs

¬	∞	∫	∏	Σ	√	∂	%	‰	◊	§	°	†	‡
logicalnot.tosf	in-nity.tosf	integral.tosf	product.tosf	summation.tosf	radical.tosf	partialdiff.tosf	percent.tosf	perthousand.tosf	lozenge.tosf	section.tosf	degree.tosf	dagger.tosf	daggerdbl.tosf

## Tabular Figures

0	1	2	3	4	5	6	7	8	9	#	-	₮	₺
zero.tf	one.tf	two.tf	three.tf	four.tf	-ve.tf	six.tf	seven.tf	eight.tf	nine.tf	numbersign.tf	-guredash.tf	baht.tf	cent.tf

⌘	¤	\$	₲	₯	€	₴	₺	₪	₹	₱	₹	£	₩
colonsign.tf	currency.tf	dollar.tf	dong.tf	drachma.tf	euro.tf	hryvnia.tf	liraTurkish.tf	naira.tf	ruble.tf	rupeeIndian.tf	sheqel.tf	sterling.tf	won.tf

¥	+	-	×	÷	=	≠	>	<	≥	≤	±	≈	~
yen.tf	plus.tf	minus.tf	multiply.tf	divide.tf	equal.tf	notequal.tf	greater.tf	less.tf	greaterequal.tf	lessequal.tf	plusminus.tf	approxequal.tf	asciitilde.tf

¬	∞	∫	∏	Σ	√	∂	%	‰	◊	§	°	†	‡
logicalnot.tf	in-nity.tf	integral.tf	product.tf	summation.tf	radical.tf	partialdiff.tf	percent.tf	perthousand.tf	lozenge.tf	section.tf	degree.tf	dagger.tf	daggerdbl.tf

## Stylistic Set 1

ŋ	ŋ	ſ	ſ
Eng.ss01	Hookleft.ss01	Rtail.ss01	phook.ss01

## Stylistic Set 2

Б	4
Bhook.ss02	Hturned.ss02

## Unencoded Glyphs

### Stylistic Set 3

Œ

ampersand.ss03

### Fraction

space.frac

### Other

Ć

Ćacute.loclPLK

Ń

Ńacute.loclPLK

Ó

Óacute.loclPLK

Ś

Śacute.loclPLK

Ż

Żacute.loclPLK

f

f.loclEWE

ć

ćacute.loclPLK

ń

ńacute.loclPLK

ó

óacute.loclPLK

ś

śacute.loclPLK

ż

żacute.loclPLK

fi

f\_i.loclEWE

fl

f\_l.loclEWE

fi

fi.loclEWE

fl

fl.loclEWE

?

.notdef

ˆ

caron.alt

˙

acute.loclPLK

˘

breve-cy

¨

dieresisacutecomb

¨

dieresisgravecomb

˘

breveacute

˘

brevegrave

ˆ

brevehookabove

˘

brevetilde

˘

circum-exacute

˘

circum-exgrave

˘?

circum-exhookabove

˘

circum-extilde

¨

dieresiscaroncomb

¨

dieresismacroncomb

˘

macrongravesingle

˘

macronacutesingle

˘

tildeacute

¨

dotmacroncomb

ó

ringacutecomb

˘

tildemacroncomb