

SPECIMEN

# COCOGOOSE

Classic

WHEN CLASSIC **DOESN'T MEAN** TRIVIAL



ZETA FONTS FOUNDRY

# COCOGOOSE

## Classic



<b>Name:</b>	Cocogoose Classic
<b>Classification:</b>	Sans Serif
<b>Publisher:</b>	Zetafonts Type Foundry
<b>Designers:</b>	Cosimo Lorenzo Pancini Francesco Canovaro Andrea Tartarelli
<b>Release year:</b>	2019
<b>Styles:</b>	16 styles, 8 weights in upright and 8 in italic
<b>Available:</b>	<a href="http://www.zetafonts.com/cocogoose-classic">www.zetafonts.com/cocogoose-classic</a>

### ABOUT

Created as a display typeface in 2012 by Cosimo Lorenzo Pancini, **Cocogoose** is one of Zetafonts most loved typefaces. A sans serif typeface of geometric proportions, with very low contrast and slightly rounded corners, it was the first typeface to be produced in the **Coco series**, an ongoing research on the design variation in gothic typefaces through the ages. Cocogoose extreme x-height and ultrabold weight (with regular being comparable to heavy weights of other typefaces), have since then made it very popular for effective display and logo use, also thanks to decorative versions like Cocogoose Letterpress. Since 2016, Andrea Tartarelli has been improving the typeface expanding the original glyph set to include cyrillic and greek and adding extra weights, widths, and italics to the original family range, and bringing Cocogoose to an impressive count of 52 variants.

In 2019, Francesco Canovaro has teamed with Andrea Tartarelli and Cosimo Lorenzo Pancini to create a new variant subfamily: **Cocogoose Classic**, featuring 8 weights and matching italics. Cocogoose Classic keeps the original design for uppercase characters while developing a new design for lowercase, with a smaller x-height, round dots and expanded open-type features, including positional numerals, alternate forms, and extended ligatures and bringing the glyph count to over 1000 glyphs. Its strong, modernist look makes Cocogoose Classic not only perfect for logos and headings, but also very readable as a text font.



**STYLES**

Cocogoose Classic Thin & *Thin Italic*

Cocogoose Classic ExtraLight & *ExtraLight Italic*

Cocogoose Classic Light & *Light Italic*

Cocogoose Classic Regular & *Regular Italic*

Cocogoose Classic Medium & *Medium Italic*

**Cocogoose Classic Bold & *Bold Italic***

**Cocogoose Classic ExtraBold & *ExtraBold Italic***

**Cocogoose Classic Black & *Black Italic***

A large, stylized graphic of the letters 'A' and 'a' in a vibrant orange-red color. The letters have a multi-layered, glowing effect, giving them a 3D appearance. The 'A' is uppercase and the 'a' is lowercase. The background is white.



Antifašistická Akcia!!

The truth will set you free. But not until it is finished with you.

Cantina Castelões™

→ The richest man is not he who has the most, but he who

**\*Değiştirilemez Teklif\***

The sun machine is coming down, and we're gonna have a

**Sexårsåldern är en lagom**

Always forgive your enemies; nothing annoys them so much

**«Ert Þú Bókstafstrúar?»**

“Those who believe in telekinetics, well, raise my hand.”

**Reiser Til Jomfruoyene**

The cure for boredom is curiosity. There is no cure for it

**Unterstützung Gemäß**

Ground Control to Major Tom. Can you hear me, Major

**Uit Van Reënboognasie**

**You miss 100 % of the shots you never take. Do you?**



LÄBIVIIMISESSE(\*)

*To the man who only has a hammer, everything he encounters*

DOSTALI NAJĎALEJ

*Feed my will to feel this moment Urging me to cross the line*

PASALÂCUL BUDA !!

*Saturn ascends, the one, the ten. Ignorant to the damage...*

DE NEÎNDEPLINIRE

*We are what we repeatedly do; excellence, then, is not an act*

FRANĀISKU JĀEMPEL

*«We can be heroes, forever and ever What d'you say?»*

AZGARAD FETIŠISM?

*[...] I worry about being a success in a mediocre world (2)*

150 COPII FRUMOȘI

*We are choosing to be here right now hold on, stay inside*

¿ES INESCRUTABLE?

*I'd rather live with a good question than a bad answer.*



## TEXT PROOF

### Light&Medium Italic 10 PT

The so-called 'psychotically depressed' person who tries to kill herself doesn't do so out of quote 'hopelessness' or any abstract conviction that life's assets and debits do not square. And surely not because death seems suddenly appealing. The person in whom its invisible agony reaches a certain unendurable level will kill herself the same way a trapped person will eventually jump from the window of **a burning high-rise**. Make no mistake about people who leap from burning windows. Their terror of falling from a great height is still just as great as it would be for you or me standing speculatively at the same window just checking out the view; i.e. the fear of falling remains a constant. The variable here is the other terror, **the fire's flames**.

### Thin 20 PT

The so-called 'psychotically depressed' person who

### ExtraLight 20 PT

doesn't do so out of quote 'hopelessness' or any a

### Light 20 PT

life's assets and debits do not square. And surely n

### Regular 20 PT

seems suddenly appealing. The person in whom l

### Medium 20 PT

reaches a certain unendurable level will kill herse

### Bold 20 PT

trapped person will eventually jump from the wi

### ExtraBold 20 PT

**high-rise. Make no mistake about people who le**

### Black 20 PT

**dows. Their terror of falling from a great height**

### COCOGOOSE THIN PT 10

① *THE MAN WITHOUT QUALITIES (1930)* - "A barometric low hung over the Atlantic. It moved eastward toward a high-pressure area over Russia without as yet showing any inclination to bypass this [...], *Albert Musil*

### COCOGOOSE EXTRALIGHT PT 10

② *GRAVITY'S RAINBOW (1973)* - "It has happened before, but there is nothing to compare it to now. It is too late. The Evacuation still proceeds, but it's all theatre. There are no lights inside the cars [...], *Thomas Pynchon*

### COCOGOOSE LIGHT PT 10

③ *ULYSSES (1922)* - "Stately, plump buck mulligan came from the stairhead, bearing a bowl of lather on which a mirror and a razor lay crossed. A yellow dressing gown, ungirdled [...], *James Joyce*

### COCOGOOSE REGULAR PT 10

④ *A TALE OF TWO CITIES (1859)* - "It was the best of times, it was the worst of times, it was the age of wisdom, it was the age of foolishness, it was the epoch of belief, it was the epoch of incredulity [...], *Charles Dickens*

### COCOGOOSE MEDIUM PT 10

⑤ *ROBINSON CRUSOE (1719)* - "I was born in the Year 1632, in the City of York, of a good Family, tho' not of that Country, my Father being a Foreigner of Bremen, who settled first at Hull [...], *Daniel Defoe*

### COCOGOOSE BOLD PT 10

⑥ *IF ON A WINTER'S NIGHT A TRAVELER (1979)* - "You are about to begin reading Italo Calvino's new novel, *If on a winter's night a traveler*., *Italo Calvino*

### COCOGOOSE EXTRABOLD PT 10

⑦ *THE CATCHER IN THE RYE (1951)* - "If you really want to hear about it, the first thing you'll probably want to know is where I was born, and what my lousy childhood was like, and how [...], *J. D. Salinger*

### COCOGOOSE BLACK PT 10

⑧ *THE MAKING OF AMERICANS (1925)* - "Once an angry man dragged his father along the ground through his own orchard. "Stop!" cried the groaning old man at last, "Stop! I did not drag [...], *Gertrude Stein*



20pt / 24 – Mixed Weights

**Nero** (Latin: *Nero Claudius Caesar Augustus Germanicus*) was the last Roman emperor of the **Julio-Claudian dynasty**. He was born *Lucius Domitius Ahenobarbus* on 15 December 37 ad in **Antium**. Nero was adopted by his great-uncle **Claudius** and became his **heir and successor**. Nero's mother, **Agrippina the Younger**, was likely implicated in Claudius' death and Nero's nomination as emperor.

16pt / 20 – Mixed Weights

During the early years of his reign, Nero was content to be guided by his mother, his tutor **Lucius Annaeus Seneca** and his Praetorian prefect, **Sextus Afranius Burrus**. As time passed, he started to play a more active and independent role in government and foreign policy. During his reign, the redoubtable general **Corbulo** conducted a successful war and negotiated peace with the **Parthian Empire**. His general **Suetonius Paulinus** crushed a major revolt in Britain, led by the Iceni **Queen Boudica**. Nero focused much of his attention on diplomacy, trade and the cultural life of the empire, ordering theatres built and promoting athletic games.

12pt / 16 – Mixed Weights

**Nero's rule is usually associated with tyranny and extravagance.** Most Roman sources, such as **Suetonius** and **Cassius Dio**, offer overwhelmingly negative assessments of his personality and reign. **Tacitus** claims that *"the Roman people thought him compulsive and corrupt"*. **Suetonius** tells that *"many Romans believed that the Great Fire of Rome was instigated by Nero to clear the way for his planned palatial complex, the **Domus Aurea**."* According to **Tacitus** he was said to have seized Christians as scapegoats for the fire and burned them alive, seemingly motivated not by public justice but by personal cruelty. **Some modern historians question the reliability of the ancient sources on Nero's tyrannical acts.** A few sources paint Nero in a more favorable light. There is evidence of his popularity among the Roman commoners, especially in the eastern provinces of the Empire, where a popular legend arose that Nero had not died and would return.

10pt / 14 – Mixed Weights

Nero's father, **Domitius**, died in 40. A few years before his death, Domitius had been involved in a political scandal that, according to Malitz: *"could have cost him his life if Tiberius had not died in the year 37, since in the previous year, Nero's mother Agrippina had been caught up in a scandal of her own"*. Caligula's beloved sister **Drusilla** had recently died and Caligula began to feel threatened by his brother-in-law **Marcus Aemilius Lepidus**. Agrippina, suspected of adultery with her brother-in-law, was forced to carry the funerary urn after Lepidus' execution. Caligula then banished his two surviving sisters, Agrippina and Julia Livilla, to a remote island in the Mediterranean Sea. According to *The Oxford Encyclopedia of Ancient Greece and Rome*, Agrippina was exiled for plotting to overthrow Caligula.

8pt / 12 – Mixed Weights

Caligula's reign lasted from 37 until 41. **He died from multiple stab wounds in January of 41** after being ambushed by his own Praetorian Guard on the Palatine Hill. Claudius succeeded Caligula as Emperor. Agrippina married Claudius in 49 ad and became his fourth wife. By February 49, she had persuaded Claudius to adopt her son Nero. After Nero's adoption, "Claudius" became part of his name: *Nero Claudius Caesar Drusus Germanicus*. Claudius had gold coins issued to mark the adoption. Classics professor Josiah Osgood has written that *"the coins, through their distribution and imagery alike, showed that a new Leader was in the making."* **David Shotton** noted that, despite events in Rome, Nero's step-brother Britannicus was more prominent in provincial coinages during the early 50s. The ancient biographer **Suetonius**, who was critical of Nero's ancestors, wrote that Augustus had reproached Nero's grandfather for his unseemly enjoyment of violent gladiator games. According to **Jürgen Malitz**, Suetonius tells that Nero's father was known to be *"irascible and brutal"*, and that both *"enjoyed chariot races and theater performances to a degree not befitting their position."*



**STYLISTIC ALTERNATES**

Stylistic Alternates or Stylistic Sets were designed to offer a secondary form of a character.

vergafz hljóðfæri  
↓ ↓ ↓ ↓ ↓ ↓  
vergaß hljóðfæri

**STYLISTIC SET 01, 02, 03...**

There are more than one Stylistic Set. Check out the possibilities of text appearance that Cocogoose Classic offers you.

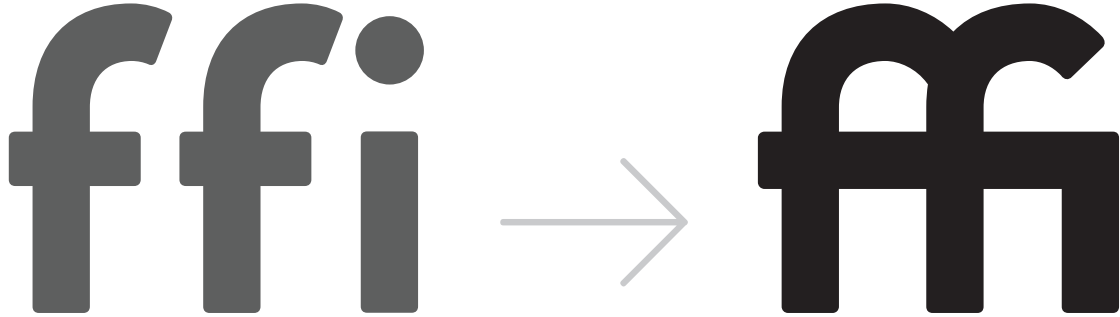
blith hljaitn  
↓ ↓ ↓ ↓ ↓ ↓ ↓ ↓  
blith hljaitn





STANDARD  LIGATURES

The **stylistic alternates** are designed to correct awkward text combinations of letters, such fi, ffi, fb. Such ligatures are applied by default

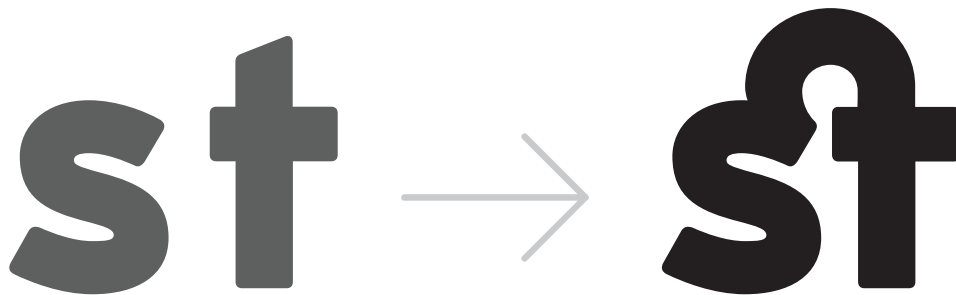


LIGATURE LIST

fb ff fh fi fj fk fl ft ffb ffi ffj ffk ffi

DISCRETIONARY  LIGATURES

**Discretionary Ligatures** are ligatures applied at the user's discretion, such as ct, st, Th, sp.



LIGATURE LIST

Th cp ct sp st tt



**SPECIAL LIGATURES**

The **Special Ligatures (dlig)** offer you the possibility to get special symbols by using key combinations without glyph panel. These are applied by default such as standard ligatures

**CIRCULAR NUMBER**

(1)(2)



① ②

**BLACK CIRCULAR NUMBER**

((1))((2))



● 1 ● 2

**ARROWS**

< + - / | + >



↑ ↗ → ↘ ⇅  
↓ ↙ ← ↖ ↔

**LETTER COMBINATION**

There are also **Special letter combinations (dlig)** this solution offers you the possibility to use special symbols by using key combinations without using glyph panel. These are applied by default such as standard ligatures

**NUMBER**

[No.]



N<sup>o</sup>

**COPYRIGHT**

(C)



©

**REGISTERED**

(R)



®

**TRADEMARK**

[TM]



™

**LITER SIGN**

[L]



ℓ



### ALTERNATE FIGURES

**Tabular Figures** are especially useful while setting columns of numbers, such as in financial reports.

PROPORTIONAL LINING

123



TABULAR LINING

| 1 | 2 | 3 |

PROPORTIONAL OLD STYLE

123



TABULAR OLD STYLE

| 1 | 2 | 3 |

### POSITIONING FIGURE/FRACTION

These various kind of figures are used for fractions, footnote references, chemical compounds, and as mathematical exponents.

<sup>12</sup>/<sub>34</sub>

FRACTION

H<sub>2</sub>O

SUBSCRIPT-INFERIOR

D<sub>2.2</sub>€

DENOMINATOR

1<sup>st</sup>

ORDINALS

X<sup>12s</sup>

SUPERSCRIPT-SUPERIOR

N<sup>1,2</sup>\$

NUMERATOR



**SMALLCAPS**

Small Caps feature substitutes lowercase with a capital versions of the letters sets within the x-height

Coco Chanel  
↓  
Coco CHANEL

**SMALLCAPS FOR CYRILLIC AND GREEK**

ОРЕМ ІПΣΟΜ ΔΟΛΟΡ  
ОРЕМ ИПСУМ ДОЛО  
Г ИМПЕТУС ДИСПУТА





**NUMBERS**

**1100+** CHARS

**220+** LANGUAGES

**3 SCRIPTS:** LATIN, GREEK, CYRILLIC

**COMMON LANGUAGE**

Afrikaans, Albanian, Asu, Azerbaijani, Basque, Bemba, Bena, Bosnian, Breton, Bulgarian, Catalan, Chiga, Colognian, Cornish, Croatian, Czech, Danish, Dutch, English, Esperanto, Estonian, Faroese, Filipino, Finnish, French, Friulian, Galician, Ganda, German, Greek, Gusii, Hungarian, Icelandic, Inari Sami, Indonesian, Irish, Italian, Jola-Fonyi, Kabuverdianu, Kalenjin, Kinyarwanda, Low German, Lower Sorbian, Luo, Luxembourgish, Luyia, Macedonian, Machame, Makhuwa-Meetto, Makonde, Malagasy, Malay, Maltese, Manx, Morisyen, North Ndebele, Northern Sami, Norwegian Bokmål, Norwegian Nynorsk, Nyankole, Oromo, Portuguese, Quechua, Romansh, Rombo, Rundi, Russian, Rwa, Samburu, Sango, Sangu, Scottish Gaelic, Sena, Serbian, Shambala, Shona, Slovak, Slovenian, Soga, Somali, Spanish, Swahili, Swedish, Swiss German, Taita, Teso, Turkish, Turkmen, Ukrainian, Upper Sorbian, Vunjo, Walser, Welsh, Western Frisian, Wolof, Zulu

TATUA COCOGOOSE TEAM

# LOVE MOM MONSTERS OF TATTOO

SHOW & EXHIBITIONS  
SOUTH PAVILION EN  
TRANCE • FREE ENTRY

IN ASSOCIATION  
WITH ART & FLAT



**RYPSE**  
FACTORY



**PADOO!**



**•SƆAW•**  
TATTOO CREATIVE LAB



**14 • 15 • 16 • 17**   
**JUNE 2019**

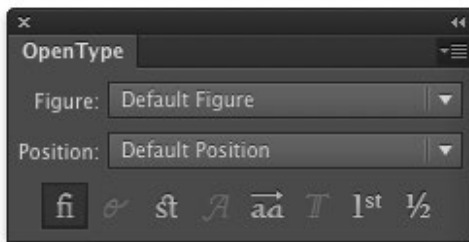
FRI	3 / 7 PM
SAT	10 AM / 1 PM 3 / 7 PM
SUN	10 AM / 1 PM 3 / 7 PM
MON	3 / 7 PM



## HOW TO USE FEATURES

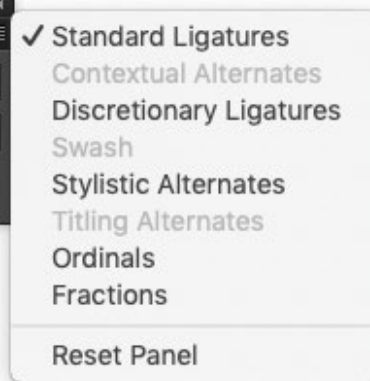
All Zetafonts typefaces feature extra glyphs and functions that are available with Open Type technology (works on Adobe software, Word, and newer Os).

Open Type features are activated in Illustrator, InDesign and Photoshop through multiple option checks in the Type → Open Type panel.



To activate Open Type panel select in the menu:

*Window → Type → Opentype panel*



The OpenType format makes it possible to incorporate typographic features, such as small caps, ligatures, old style numerals and lining numerals, all within one font file, thereby simplifying font management and usage.

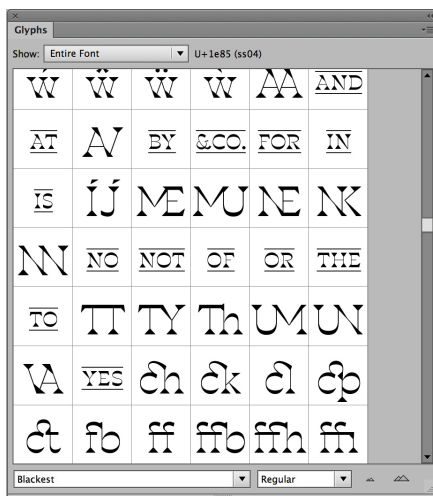
FOR MORE INFORMATION CHECK OUR **FAQ PAGE:**

<http://bit.ly/zetafaq>

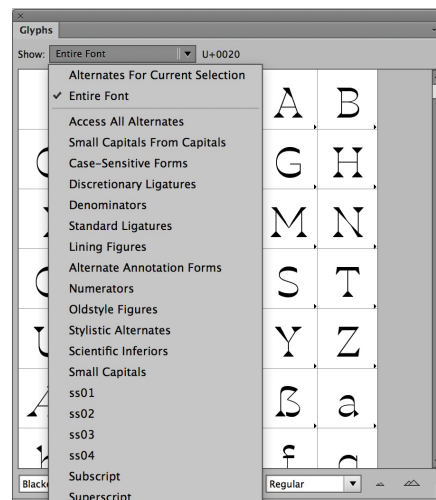
## USE SPECIAL FEATURES AND STYLE SETS

Illustrator's Glyphs panel provides quick access to a wide range of special characters. With the Type tool, click to place the

insertion point, then double-click the character you want to place in the text from the Glyphs panel.



To activate glyph panel go to:  
*menu → window → type → glyph panel*



You can select the stylistic set you want to be display





## AVAILABLE FORMATS AND INSTALLATION SPEC

In the package are available the most common file format for every purpose:

**TTF, OTF, EOT, WOFF, WOFF2**

### → Install on Windows 10

Once downloaded, right-click on the file, select *“Extract All”*. After extraction (or accessing the file at its downloaded destination), right-click on the file and select *“Install”*. Otherwise navigate to **Cortana’s search field** on the taskbar, type *“Control Panel”* and click the corresponding result. With the Control Panel open, navigate to *“Appearance and Personalization”* and click on *“Fonts”* in the main window.

Here you can **Drag and Drop** your files.

### → Install on Mac OS

Double click the unzipped font file and **Font Book** will open a preview of the font.

Click *“Install Font”* at the bottom of the preview.

### **HOW TO GET THE FONT**

In order to use our fonts in a commercial project, you need to pay a license fee that varies according to usage and number of users. Acquiring a license on our website [www.zetafonts.com](http://www.zetafonts.com) is the fastest way. You will be able to download the fonts immediately after the payment. Our website accepts payments with credit card or with PayPal account, both using PayPal POS that accepts all main credit cards. For more information about licensing, visit [www.zetafonts.com/licensing](http://www.zetafonts.com/licensing)

### **TRY BEFORE YOU BUY**

Our fonts are free to try and for personal/non-commercial use. You can download the trial version in order to test the integration in your design by visiting the font page on [www.zetafonts.com](http://www.zetafonts.com)

### **CUSTOM FONT**

Custom fonts is part of the services we offer as a type foundry. This include design completely new typefaces, modifications of existing ones, or creation of special language sets. For more information visit: [www.zetafonts.com/custom-fonts](http://www.zetafonts.com/custom-fonts)

### **WEBFONTS**

All Zetafonts typefaces are available also as webfonts as self-hosting webfont licence. We provide the fonts as EOT, WOFF, WOFF2 formats.



Zetafonts is a Ligature srl division

LIGATURE  
SRL

Ligature srl  
via Ghibellina 100  
50122 Florence  
Italy

[info@zetafonts.com](mailto:info@zetafonts.com)  
[www.zetafonts.com](http://www.zetafonts.com)

Zetafonts is an independent digital type foundry run by an Italian type designer Team and currently based in Florence. It has spent more than a decade designing typefaces for print, digital, environmental design, branding and corporation. Besides creating a wide range of high quality retail typefaces, Zetafonts also provides custom typeface design services for commercial and institutional clients.

© 2018 Ligature srl.  
All rights reserved.

ZETA FONTS.COM



ZETA FONTS  
FOUNDRY

CONTACT: [INFO@ZETA FONTS.COM](mailto:INFO@ZETA FONTS.COM)